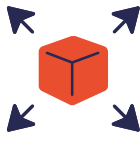


# KEY FIGURES ESTIMATED FOR THE NORWEGIAN SPACE SECTOR 2021



**11 BNOK**  
COMMERCIAL ANNUAL  
TURNOVER



**8.9 BNOK**  
COMMERCIAL EXPORT



**2 200**  
EMPLOYED BY  
COMMERCIAL ACTORS



**30 %**  
WOMEN % OF EMPLOYEES  
NON-COMMERCIAL ACTORS



**11.7 BNOK**  
TOTAL ECONOMIC ACTIVITY



**138**  
ACTORS WITH ACTIVITIES  
IN THE SPACE SECTOR



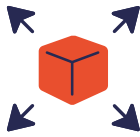
**2 700**  
EMPLOYEES IN  
SPACE SECTOR



**20 %**  
WOMEN % OF EMPLOYEES  
COMMERCIAL ACTORS



**700 MNOK**  
NON-COMMERCIAL  
ECONOMIC ACTIVITY



**81 %**  
AVERAGE COMMERCIAL  
EXPORT RATE



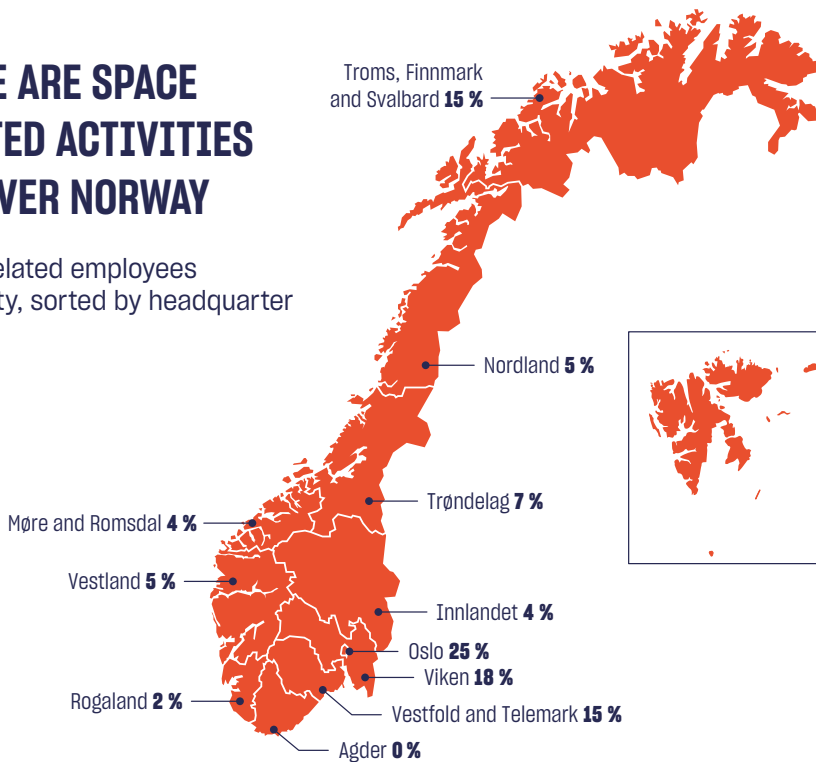
**500**  
EMPLOYED BY NON-  
COMMERCIAL ACTORS



**223**  
MEMBERS IN SPACE RELATED  
STUDENT ASSOCIATIONS

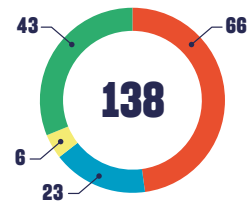
## THERE ARE SPACE RELATED ACTIVITIES ALL OVER NORWAY

Space related employees by county, sorted by headquarter

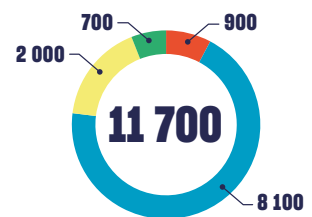


## BOTH SMALL AND LARGE ACTORS ARE INVOLVED

Number of actors per type of actor



Economic activity (in MNOK) per type of actor



## THE NORWEGIAN SPACE SECTOR IS DOMINATED BY DOWNSTREAM ACTIVITIES



**18 %** UPSTREAM AS % OF TOTAL ECONOMIC ACTIVITY

**76 %** DOWNSTREAM AS % OF TOTAL ECONOMIC ACTIVITY

**6 %** NON-COMMERCIAL AS % OF TOTAL ECONOMIC ACTIVITY

## A FEW ACTORS ARE RESPONSIBLE FOR A MAJORITY OF THE ACTIVITY

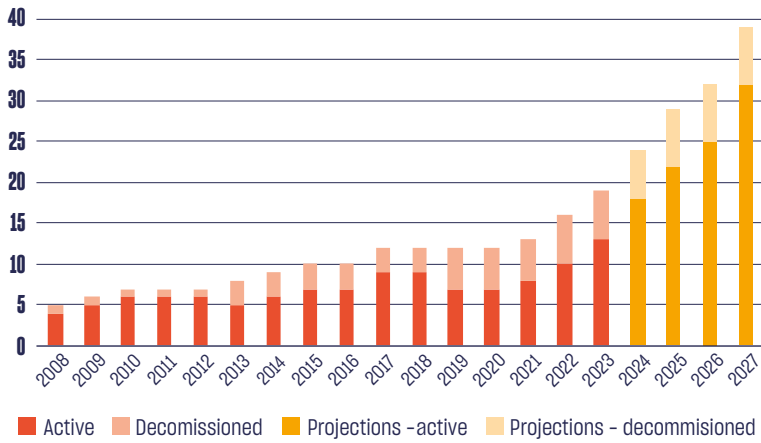
**71 %**



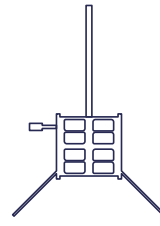
TOP 5 ACTORS ARE RESPONSIBLE FOR 71% OF THE ECONOMIC ACTIVITY

- Micro** company (1-9 employees) and **small** company (10-49 employees)
- Medium** company (50-250 employees)
- Large** company (250+ employees)
- Non-commercial** actors (Institutes, universities, NGOs, government)

## NORWEGIAN SATELLITES



## HISTORIC FIGURES INCLUDING SEPTEMBER 2023



**19**

NORWEGIAN  
SATELLITES



**1205**

SOUNDING ROCKETS  
LAUNCHED FROM  
NORWAY



**0**

LAUNCHES TO ORBIT  
FROM NORWAY

## THE SPACE SECTOR'S CONTRIBUTIONS TO THE NORWEGIAN ECONOMY

**3.5 BNOK**

VALUE CREATION

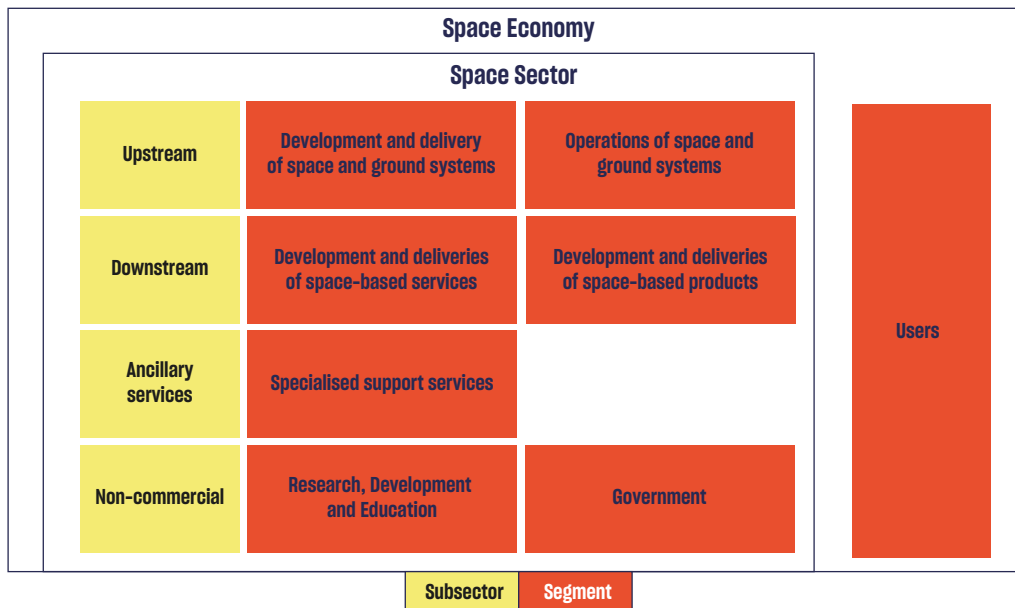


**5.4 BNOK**

CONTRIBUTION TO GDP



## DEFINITION OF THE SPACE SECTOR



This study is only concerned with the space sector.

## METHODOLOGY AND DISCLAIMERS:

The numbers are a result of a project conducted by the Norwegian Space Agency (NOSA), with the support of Oslo Economics in 2022-2023. The numbers are based on data from 2021.

The project included a sector survey with an approximately 38% response rate. As such, the numbers presented are a combination of reported data, public data and estimated data.

The report is sensitive to estimates being skewed by a few big actors, errors typical for self-reporting, and some figures being based on our own assumptions.

As this is the first time NOSA conducts this study, we aim to learn and improve the reporting over time, and hope actors will contribute with data through future surveys and dialogue.

For questions about the survey: [spaceagency@spaceagency.no](mailto:spaceagency@spaceagency.no)

Thank you to Oslo Economics for their support in producing and conducting this study.

All rights are reserved to the Norwegian Space Agency.