



Innovations and tools
against
deforestation.

Ongoing projects and
collaborative initiatives in
Brazil

NASF 2024-Aquafeed industry News

PATRICIA SUGUI
ESG MANAGER



Index

I. CJ SELECTA

OUR PRIORITIES

DEFORESTATION COMMITMENT

II. INTEGRATED SOLUTIONS

TOOLS

III. SUCCESSFUL CASES

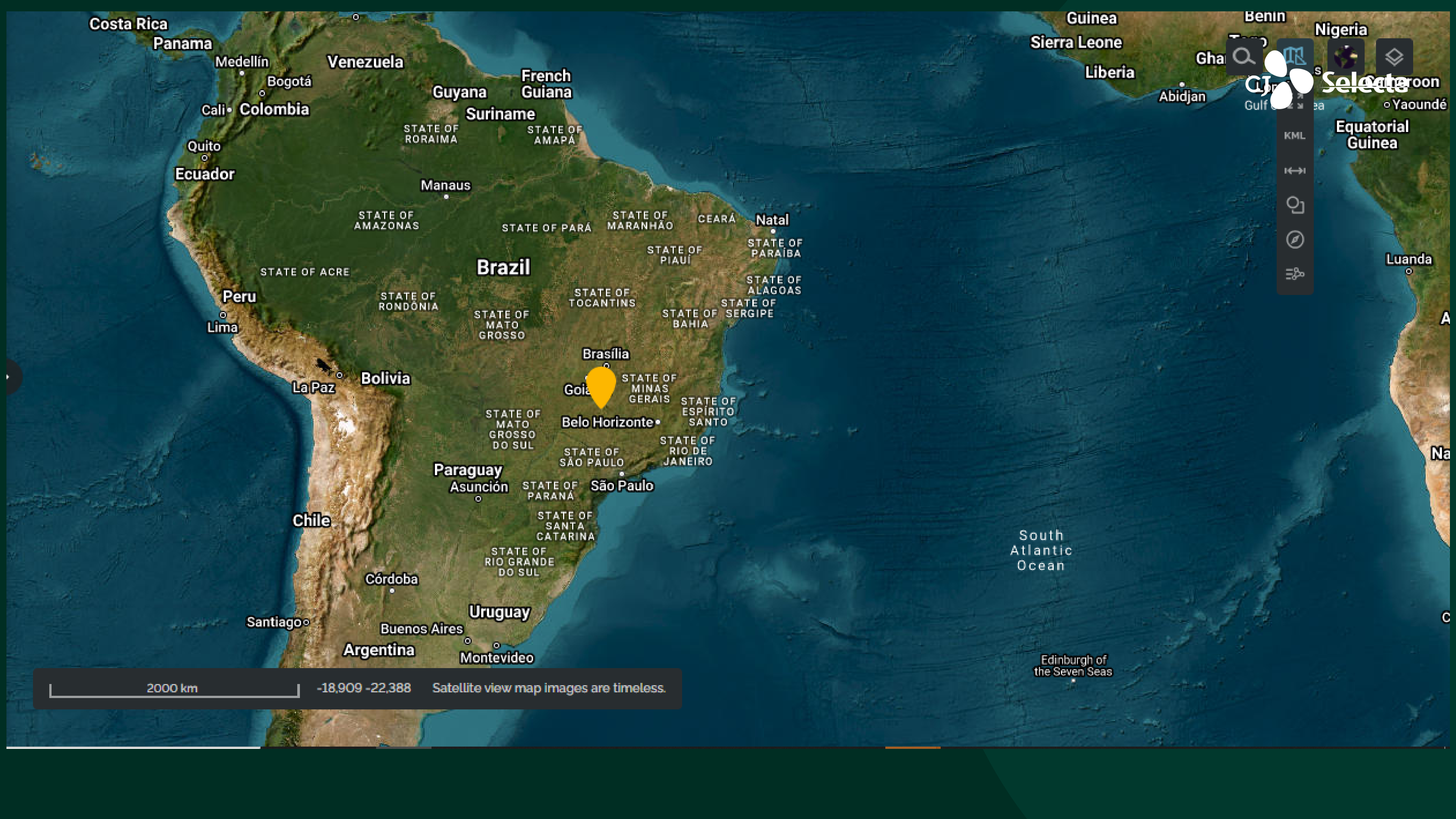
OUR ACHIEVEMENTS

HARVESTING RESULTS

I. CJ Selecta

Our Priorities

Deforestation



Costa Rica

Panama

Medellín

Bogotá

Venezuela

Cali • Colombia

Quito

Ecuador

Guyana

French Guiana

Suriname

STATE OF RORAIMA

STATE OF AMAPÁ

Manaus

STATE OF AMAZONAS

STATE OF PARÁ

STATE OF MARANHÃO

CEARÁ

Natal

STATE OF PARAIBA

STATE OF PIAUI

STATE OF ACRE

Brazil

STATE OF RONDÔNIA

STATE OF TOCANTINS

STATE OF BAHIA

STATE OF ALAGOAS

STATE OF SERGIPE

Peru

Lima

STATE OF MATO GROSSO

STATE OF MATO GROSSO DO SUL

Brasília

Goia

STATE OF MINAS GERAIS

STATE OF ESPÍRITO SANTO

Belo Horizonte

STATE OF SÃO PAULO

STATE OF RIO DE JANEIRO

Paraguay

Asunción

STATE OF PARANÁ

São Paulo

Chile

STATE OF SANTA CATARINA

STATE OF RIO GRANDE DO SUL

Córdoba

Uruguay

Santiago

Buenos Aires

Argentina

Montevideo

South Atlantic Ocean

Edinburgh of the Seven Seas

Search bar with a magnifying glass icon and a search icon.

Navigation icons: Home, Back, Forward, Full Screen, Print, Share, and a menu icon.

Select

Equatorial Guinea

Luanda

Na

C

2000 km

-18,909 -22,388

Satellite view map images are timeless.



Vision

UNRIVALLED COMPANY IN SOY NUTRIENTS, WITH INNOVATION, QUALITY AND SUSTAINABILITY

Our Priorities

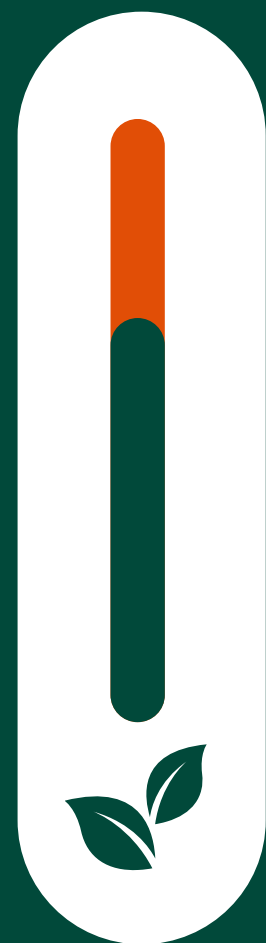
GENERATE POSITIVE IMPACT IN SOCIETY

IMPROVE PERFORMANCE FOCUSED ON
SUSTAINABLE BUSINESS DEVELOPMENT



Commitment to keep operations Deforestation **free**

Protecting sensitive biomes,
respecting indigenous, local
communities and human rights



II. Integrated Solutions



Certification



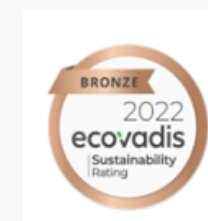
Innovative
tools





Certifications

Certifications and traceability have been increasingly demanded by consumers in Brasil and abroad. ProTerra and RTRS certified soy ensure deforestation free and also socio and environmental standards. Certification plays an important role in farmers engagement.





Innovative tools



Satellite Monitoring



Soy Farm monitoring



Verification of socio and environmental conditions



SOY Trace App



App created by CJ Selecta



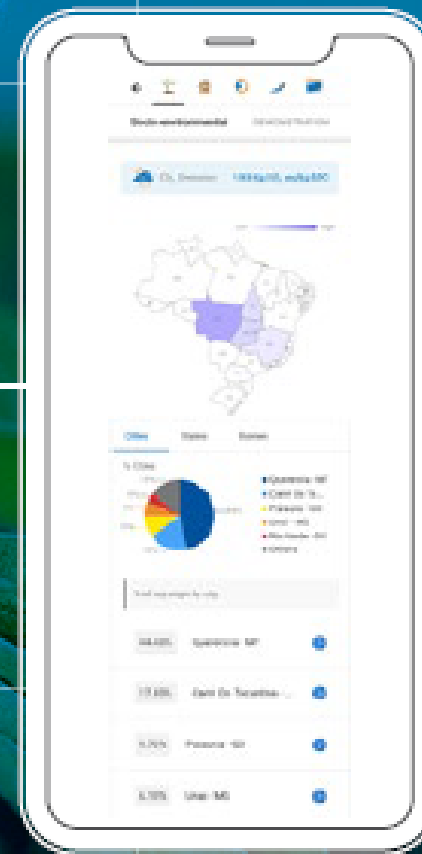
Make Soy products traceability possible



CJ SELECTA

TAKING SUPPLIER COLLABORATION TO HIGHEST LEVEL

SOY
TRACE



SOY TRACE™

Unique solution designed to give easy access to traceability of CJ Selecta's products

- Soy TRACEABILITY
- SOCIO-ENVIRONMENTAL Risk of origin
- CARBON footprint
- QUALITY and LOGISTICS information



Watch the video containing
SOY TRACE highlights



THIS NEW
SERVICE

CAN BE

EASILY ACCESSED

BY **MOBILE**

APP OR

WEBSITE AND

IT WILL BRING

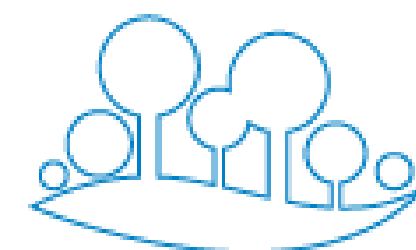
INFORMATION

ABOUT:

Soy
TRACEABILITY
(states, municipalities
and biomes of origin)

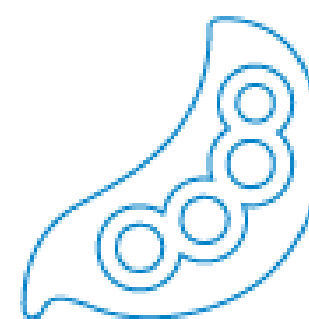


SOCIO-ENVIRONMENTAL
RISK of the
municipalities
of origin



The **CARBON** footprint
(kg of CO₂ per kg of product)

QUALITY,
analysis, transgenic



INFORMATION
documentation on
shipping logistics

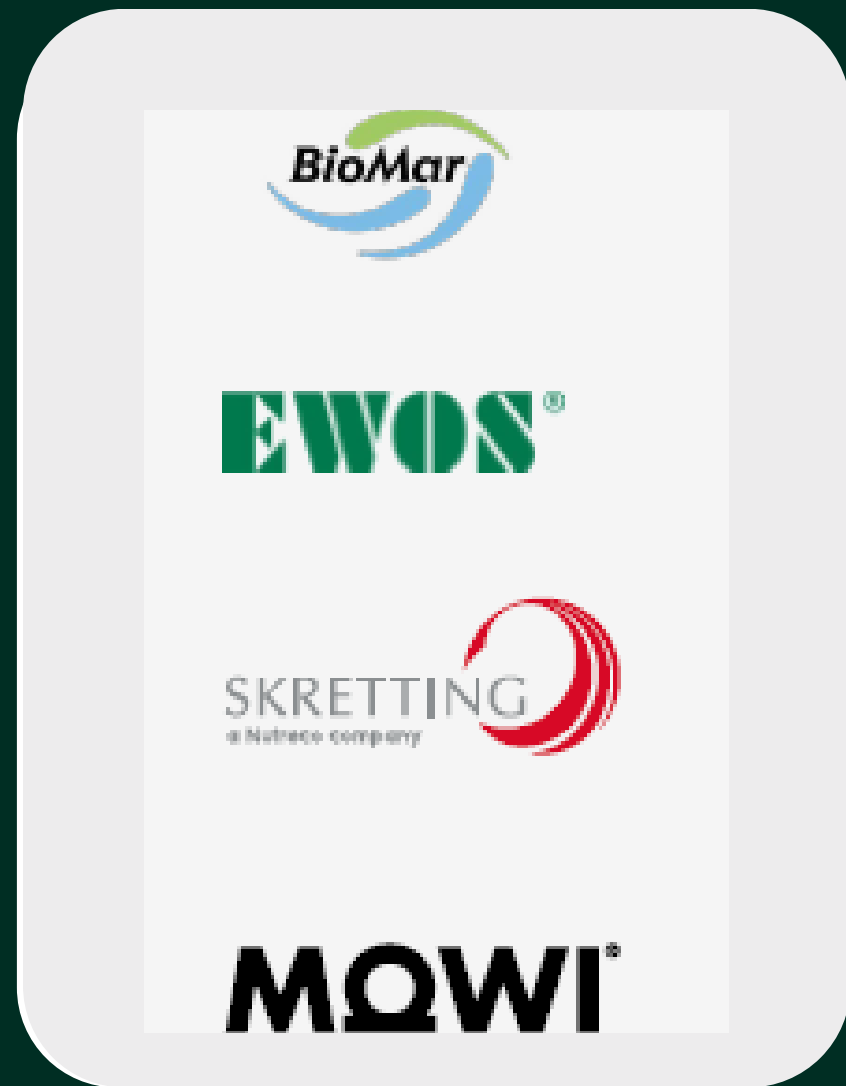
SOY
TRACE

III. Successful Cases

Partnership

Our Achievements

Aquaculture Dialogue Group



DELIVER DEFORESTATION AND CONVERSION FREE
SOY TO AQUAFEED INDUSTRY IN NORWAY

GREEN Refinery

BUILDING A SUSTAINABLE
DEFORESTATION-FREE SOY
SUPPLY CHAIN



Growing Partnerships

CJ SELECTA AND UNILEVER
TOGETHER TO PROMOTE
REGENERATIVE AGRICULTURE
PRACTICES IN BRAZIL



**Soil Health,
Biodiversity &
Livelihoods**

III. Successful Cases

Our Achievements

Our Achievements



Free Amazon Biome

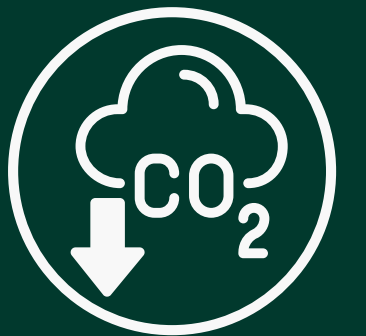
SINCE 2023



SATELITE MONITORING



INDIRECT SUPPLIER ENGAGEMENT



1.90

Kg CO₂eq/Kg SPC

CARBON FOOTPRINT

Carbon Footprint

STRATEGY IN FAVOR OF SUSTAINABILITY



6.40



Kg CO₂eq/
Kg Soybean

1.90



Kg CO₂eq/
Kg SPC



1.90 Kg CO₂eq/
Kg SPC



EMISSIONS LCA NGMO SPC

- Logistics
- Industrial
- Agriculture

Harvesting Results

PASSION FOR PEOPLE, PASSION FOR THE ENVIRONMENT, PASSION FOR OUR PRODUCTS, PASSION FOR OUR COOPERATION



PATRICIA.SUGUI@CJ.NET



WWW.CJSELECTA.COM.BR

